

Children's Mental Health Initiative

CHMI 3.0

No Wrong Door

APRIL 26, 2021



UnityPoint Health
UnityPlace

Overview

- The Children's Health Initiative or CHMI 3.0 is a need identified by the Greater Peoria Mental Health Initiative, led by UnityPoint Health Methodist Medical Center.
- The overall goal is to provide children and their families, with lived experience, a formalized System of Care in Peoria, Tazwell, and Woodford Counties.



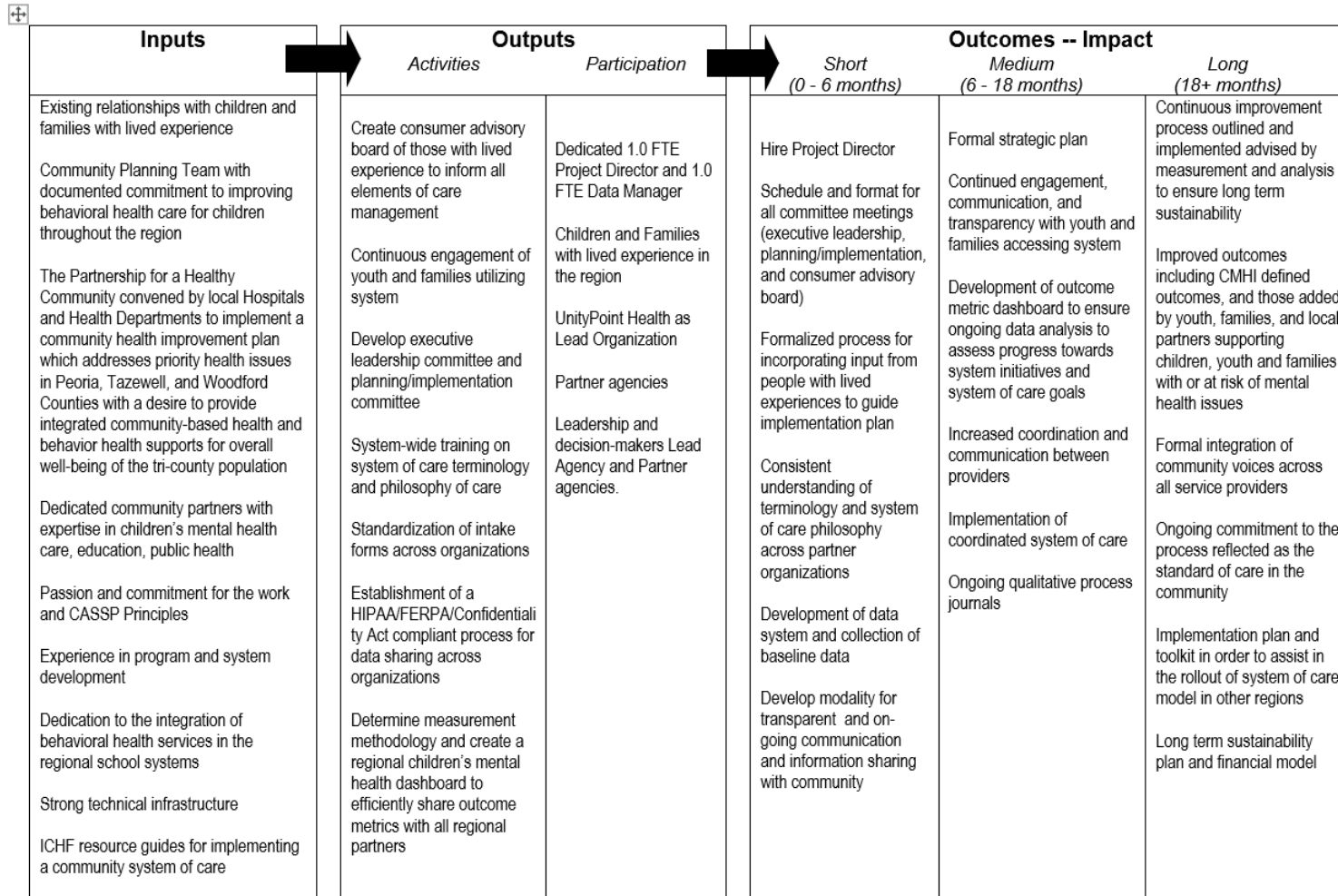
What is a System of Care?

- Broad, flexible array of effective services and supports for a defined population
 - Organized into a coordinated network, integrates care planning and management across multiple levels
 - Culturally and linguistically competent and trauma-informed
 - Meaningful partnerships with families and youth at service delivery, management, and policy levels
 - Supportive policy and management infrastructure
 - Data-driven
-

Logic Model

Program: Greater Peoria Mental Health Initiative

Logic Model



Approach: No Wrong Door

Coordinated Care

- Any child and their family can be entered into this new system of care through any provider
- They will receive coordinated care management across all the providers that are a part of this System of Care.



Statistical Motivators

- 2019 Tri-County Area CHNA Survey: Residents were asked to identify the most prevalent health issues in the community.
- Mental health was identified as the most significant issue (69% of the population).

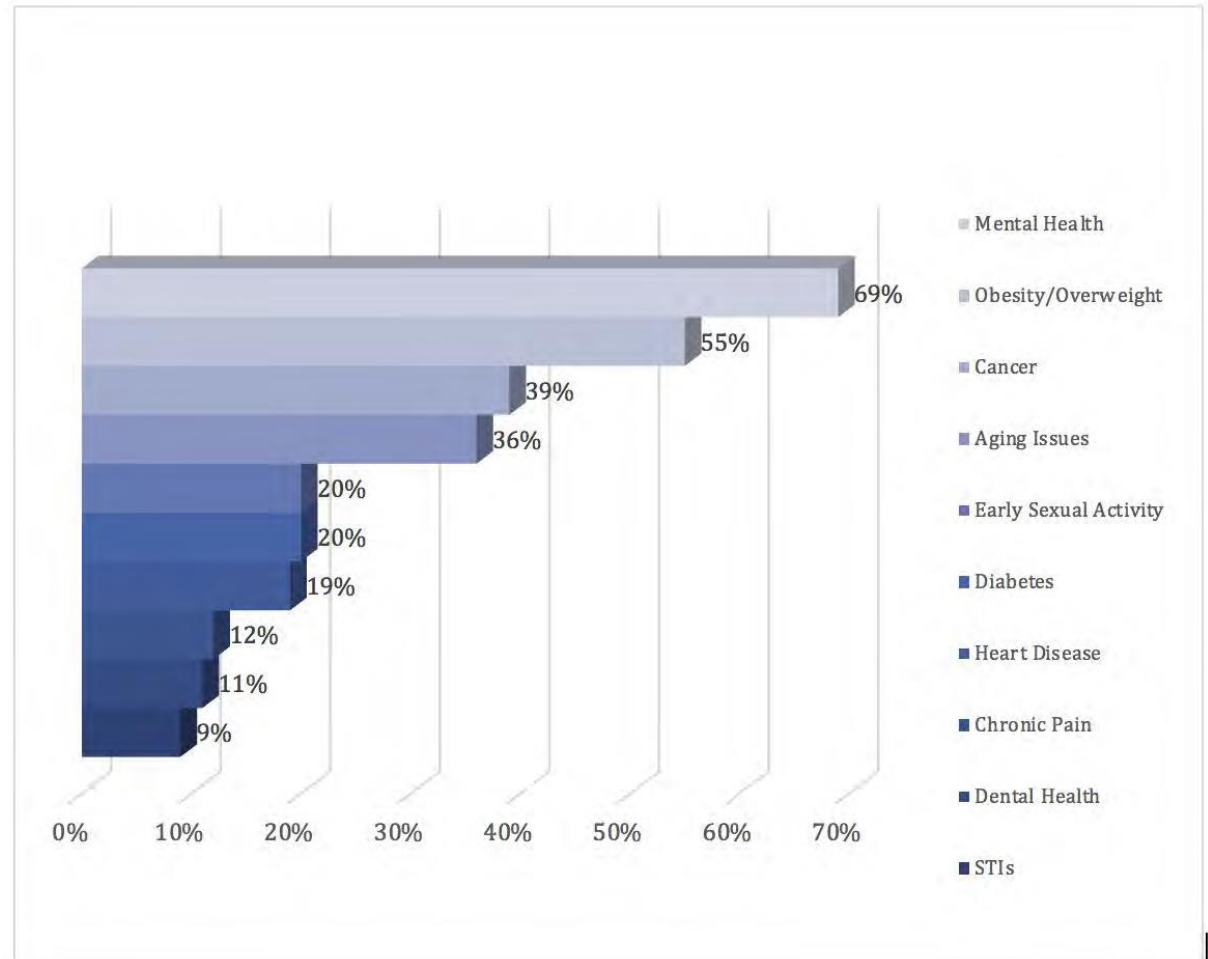


Figure 2-20: Perception of Health Issues Peoria Tri-County Area, 2019

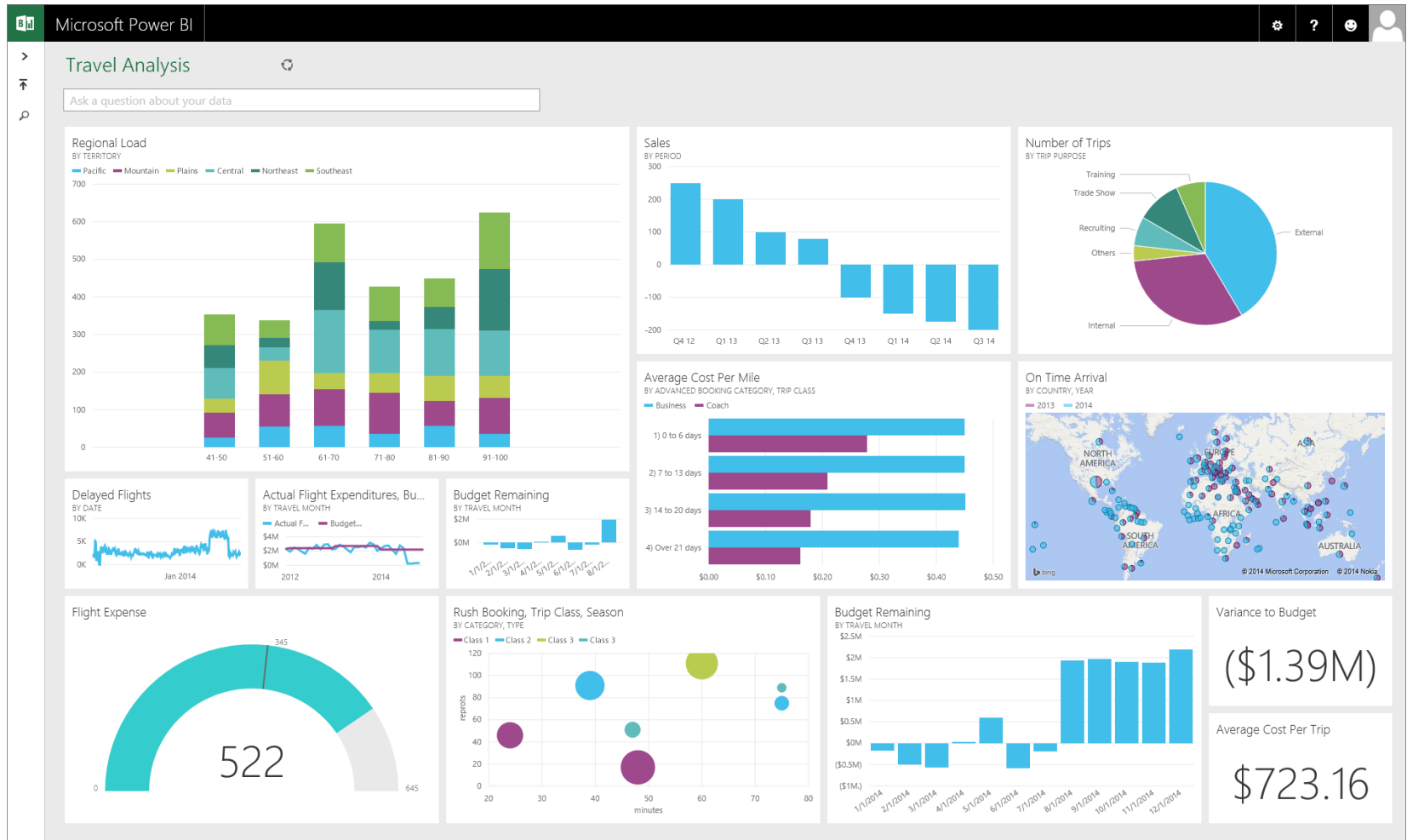
*Note: Percentages do not equal 100, as participants could select up to three issues.

Referral Network Tool & Power BI

- **Referral Network Tool:** web-based referral tool to help close the gap between the company that gave the referral and the company that is offering their services.
- **Power BI:** data visualization tool that helps take complex data and provide accurate and professional looking dashboards.
 - Able to send daily dashboard reports that can be set to automatically refresh and update your dashboard up to 8 TIMES IN ONE DAY!

Tools

Power BI

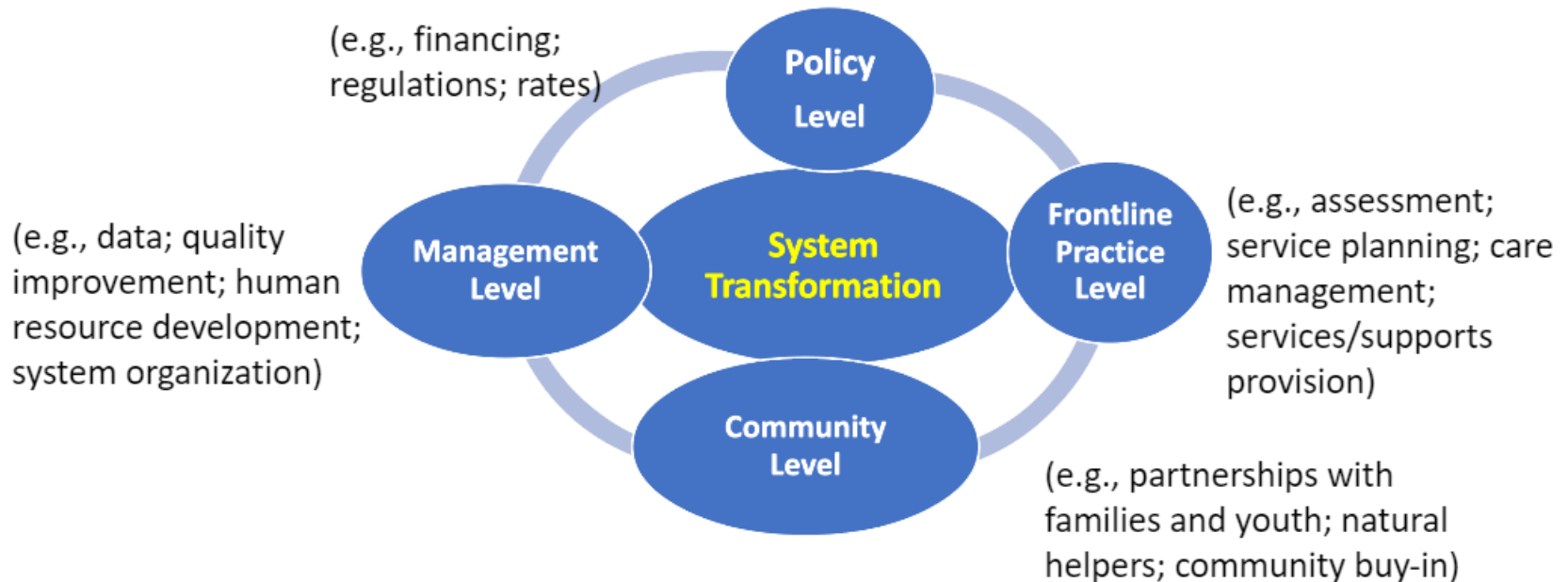


Power BI



Collaboration Is The Key

Building Systems of Care = Transforming Systems



Pires, S. (2010). *Building systems of care: A primer, 2nd Edition*. Washington, D.C.: Human Service Collaborative for Georgetown University National Technical Assistance Center for Children's Mental Health.

Thank You

Unityplace.org

